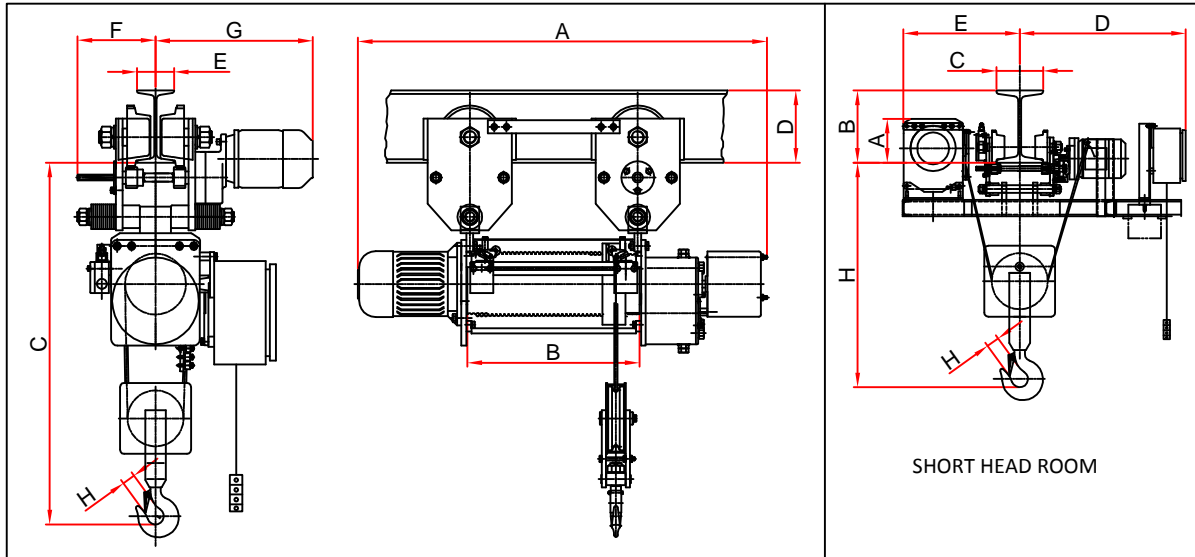
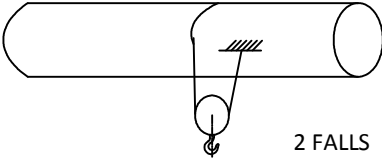
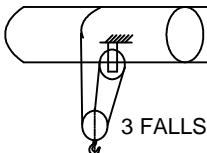


# WRH N & WRH NO - WIRE ROPE HOISTS



	Capacity (SWL)	MT	WRH NO			WRH N			WRH N		
			1			2			3		
	Lift	Mtrs.	6	9	12	5.2	8.2	11.2	3.4	5.4	7.4
A		mm	995	1125	1255	1020	1145	1275	1020	1145	1275
B	Drum Length	mm	417	546	675	385	514	643	385	514	643
	Approx. Weight	Kg	164	175	180	225	240	255	300	315	330
	No. of Falls		 2 FALLS			 3 FALLS					
	Rope Dia.	mm	8			10			10		
	Hoist Speed	MPM	5			5			3.3		
	Trolley Speed	MPM	15			15			15		
	Hoist Motor	HP(KW)/RPM	1.5 (1.11)/1500			3 (2.2)/3000			3 (2.2)/3000		
	Trolley Motor	HP(KW)/RPM	0.25 (0.18)/1000			0.25 (0.18)/1000			0.5 (0.37)/1000		
	Trolley Wheel Dia./Qty.	mm (Nos.)	115/4			115/4			115/4		
C	Head Room	mm	1000			1200			1450		
D	Min. Beam Height	mm	175			175			175		
E	Beam Flange	mm	90-210			90-210			90-210		
F		mm	190			190			190		
G		mm	575			575			575		
H		mm	31			34			42		

## SHORT HEAD ROOM MODEL (Optional)

Model	Capacity	A (Max.)	B (Min.)	C		D (Max.)	E (Max.)	H (Min.)
				(Min.)	(Max.)			
WRH NO	1	200	250	90	210	600	500	500
WRH N	2	200	250	90	210	730	500	600

Data Tolerance  $\pm 10\%$ .

All dimensions are in mm

### NOTES:

- ◆ Optional travelling speed of 7.5/3.25/2.5 m/min. can be offered.
- Check "I" Beam mounting arrangements, trolley plates will project 10mm above 'I' beam, if beam height is 150 mm.
- SHR Model is suitable for straight path only boggie can be supplier on request.